



University of California
San Francisco

Androgen and Estrogen Receptor in the Developing Human Penis and Clitoris

Society of Pediatric Urology

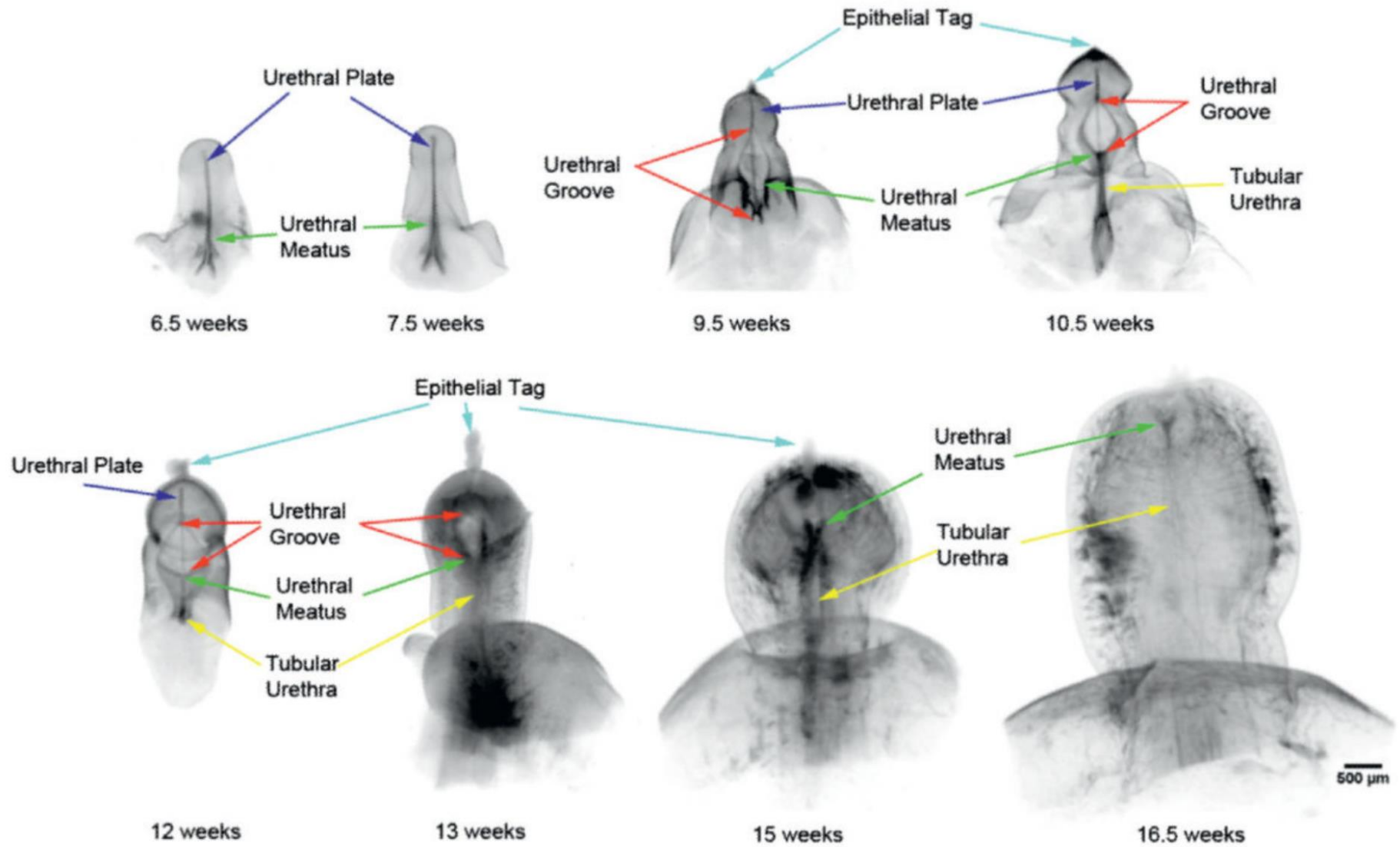
Scottsdale, AZ 2019

Yi Li, MD PGY5

UCSF Department of Urology

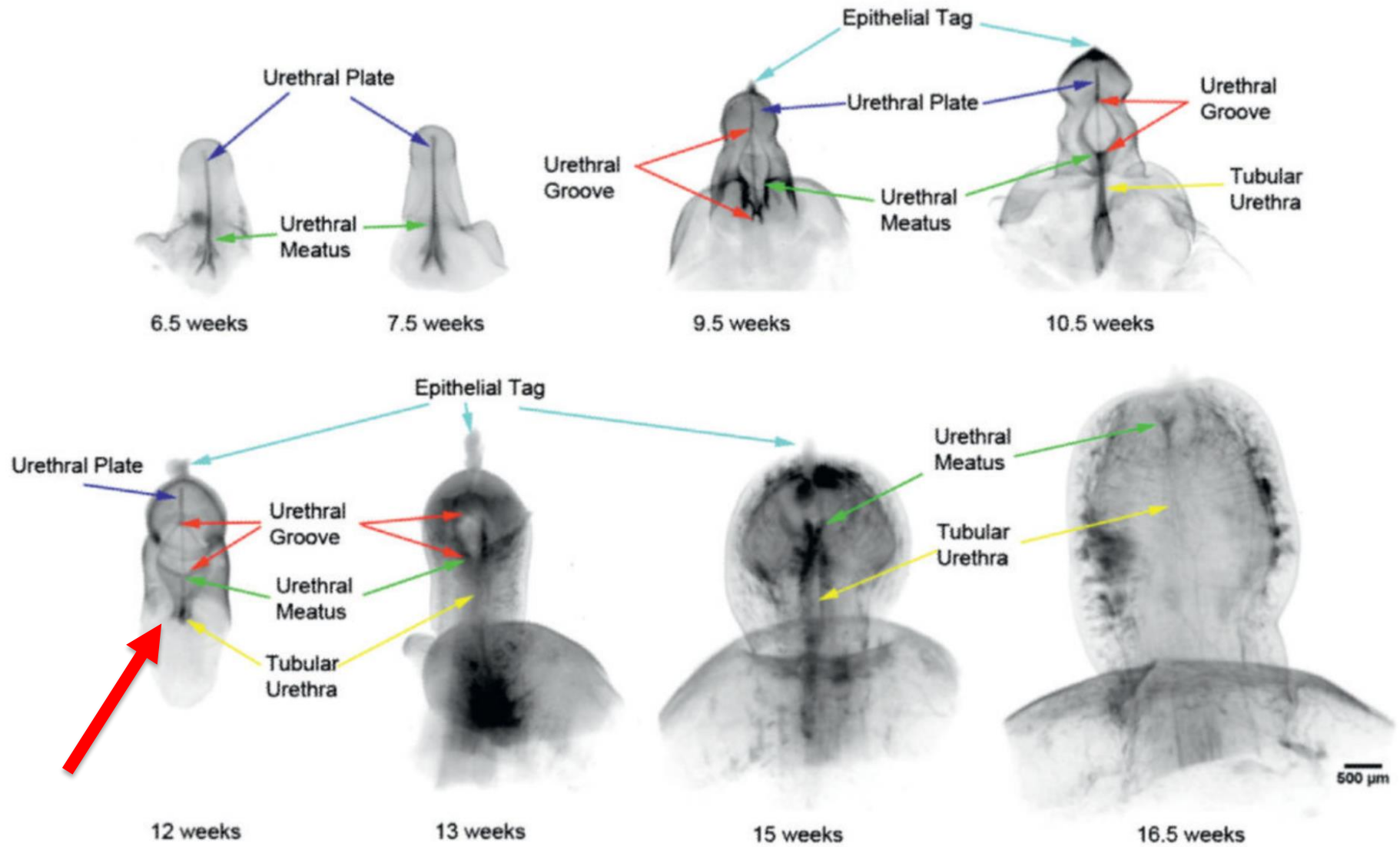
1/21/2020

Development of the Human Male Urethra



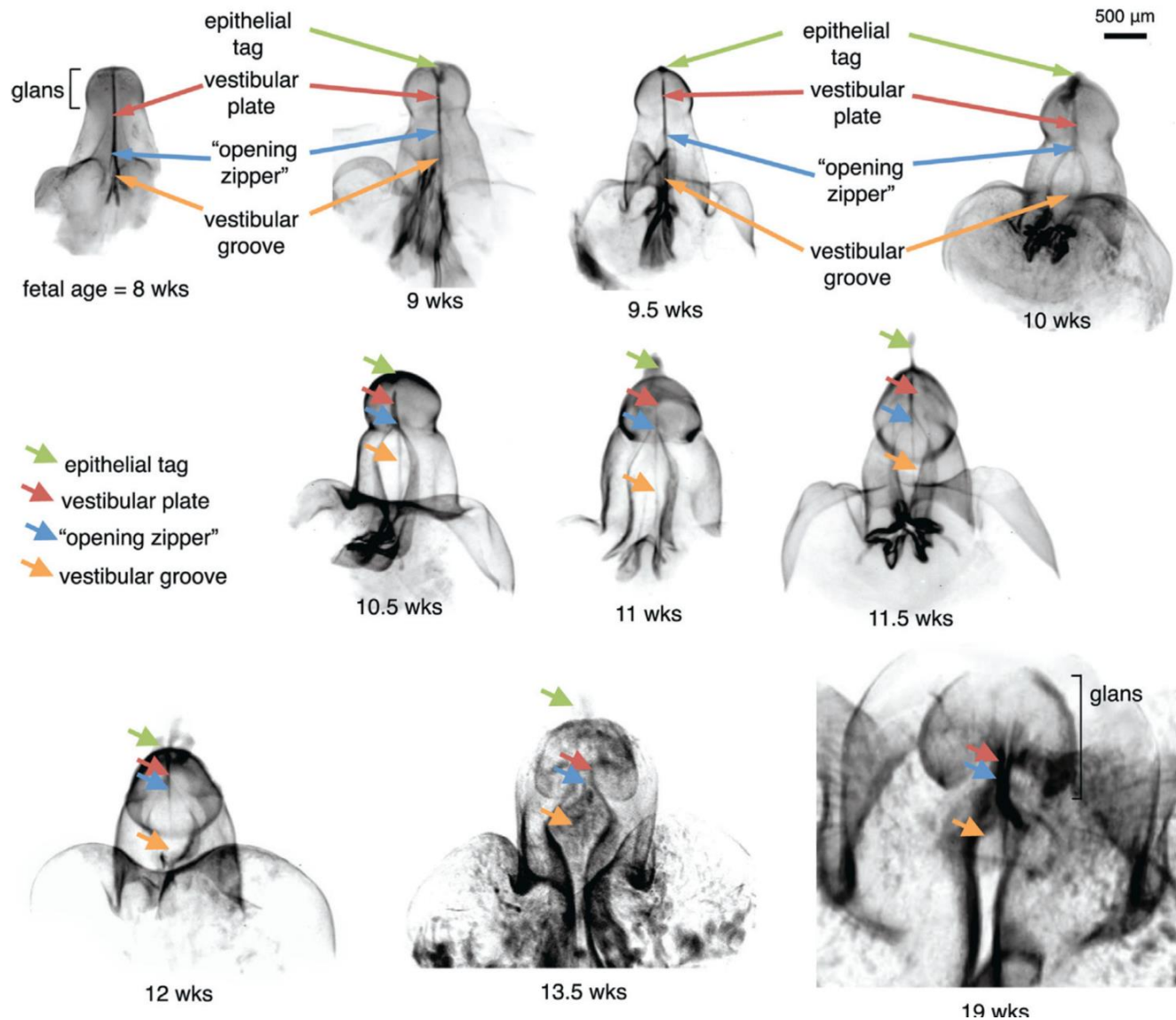
Li et al, 2015

Development of the Human Male Urethra



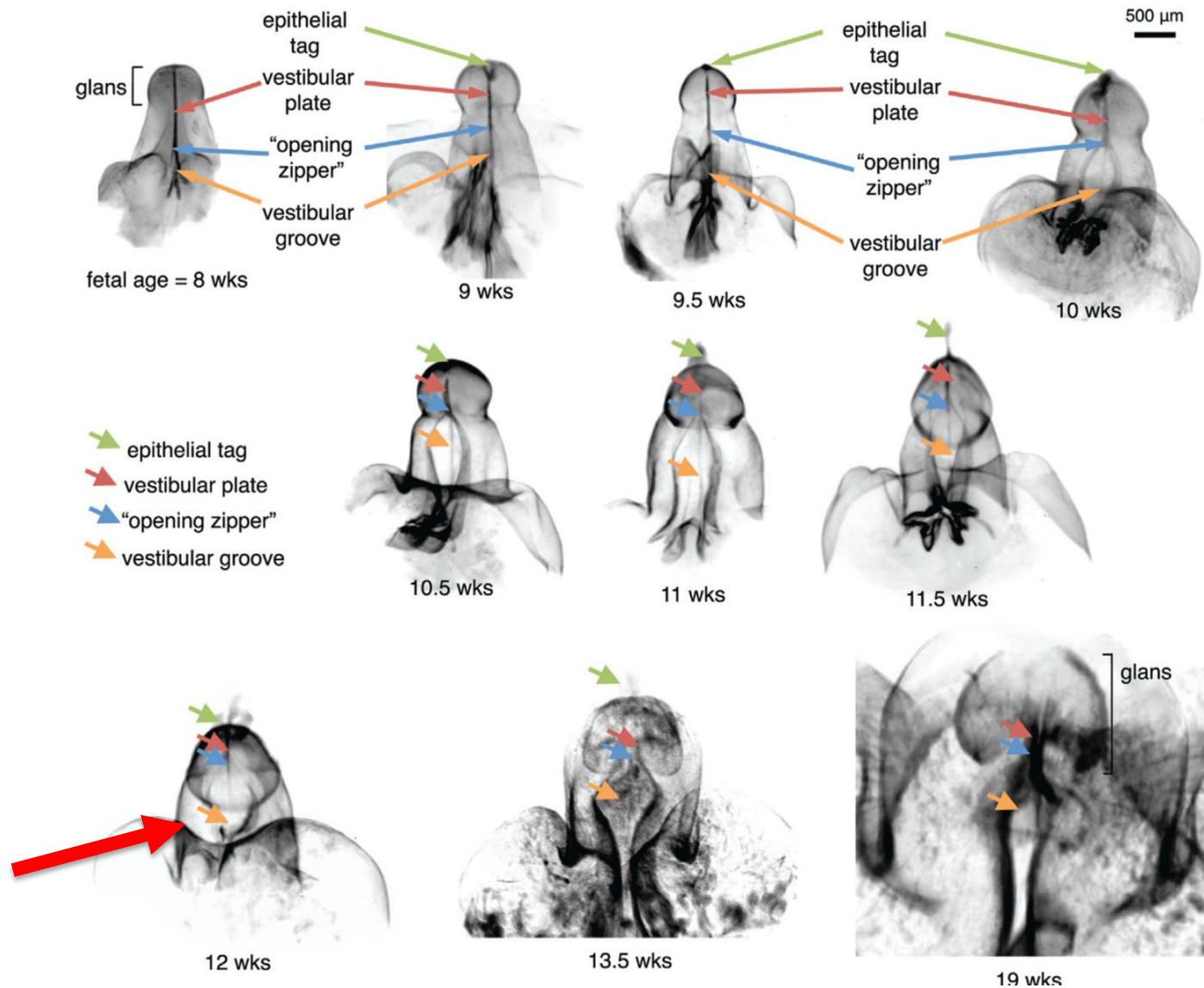
Li et al, 2015

Development of the Human Female Urethra



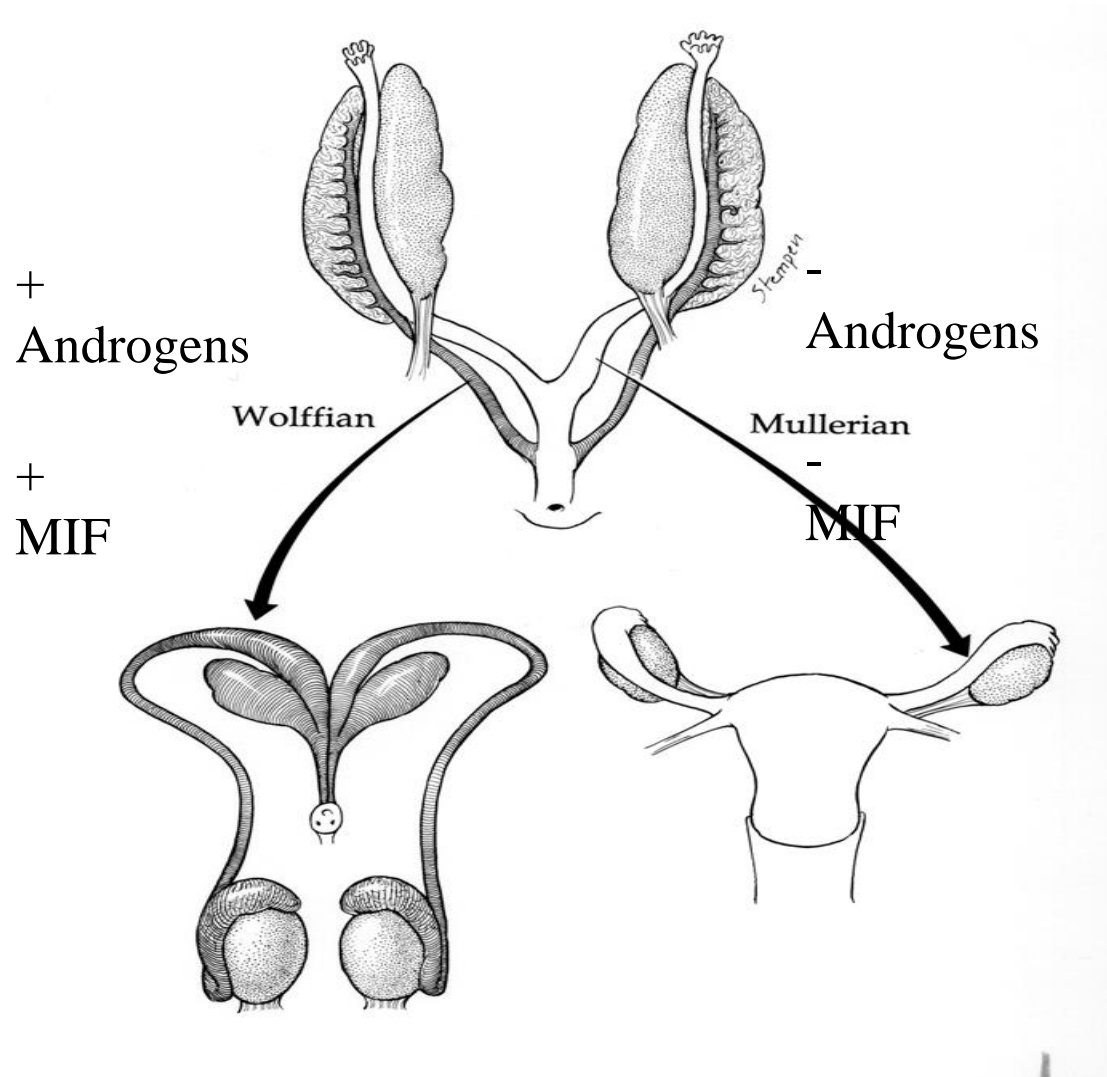
Overland et al, 2016

Development of the Human Female Urethra



Overland et al, 2016

Jost Hypothesis



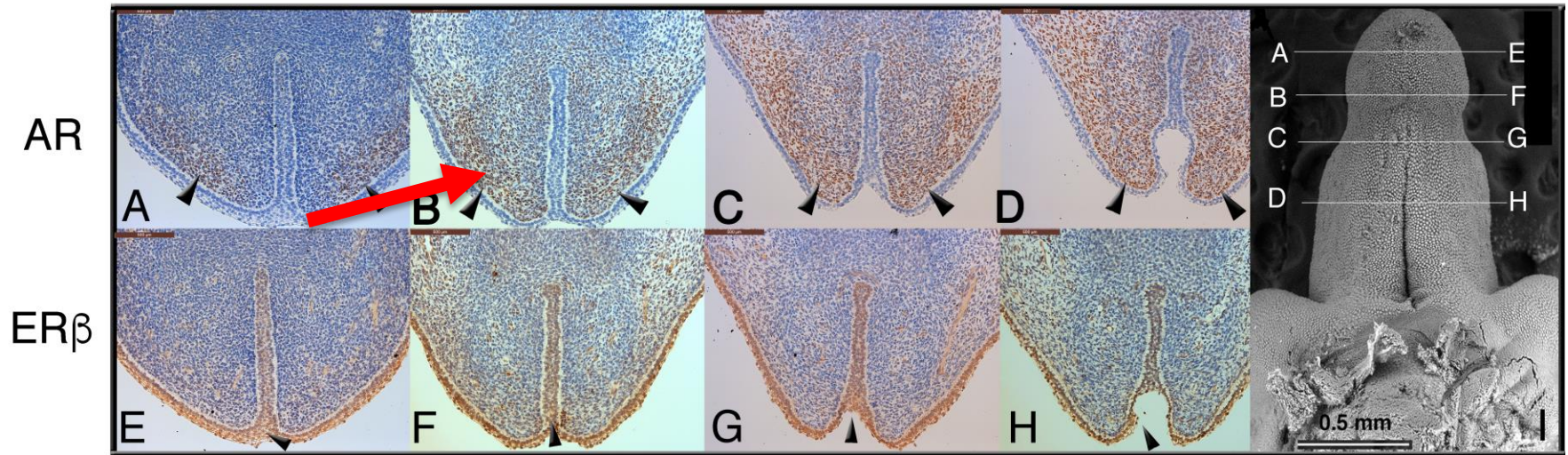
Hypothesis:

The Androgen Receptor along with Estrogen Receptor will be selectively expressed in strategic locations in the developing human fetal penis and clitoris

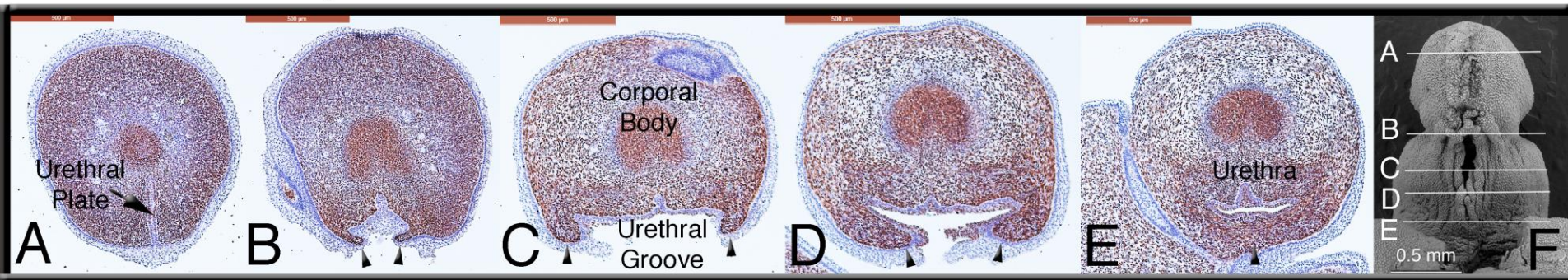
Methods

- 36 human male and female fetal genital tubercle specimens, 8 to 17-week fetal age were evaluated for scanning electron microscopy, optical projection tomography and immunohistochemical staining.
- Transverse and sagittal sections six microns in thickness were immunostained with antibodies to Androgen Receptor (AR), Estrogen Receptor (ER α and ER β).

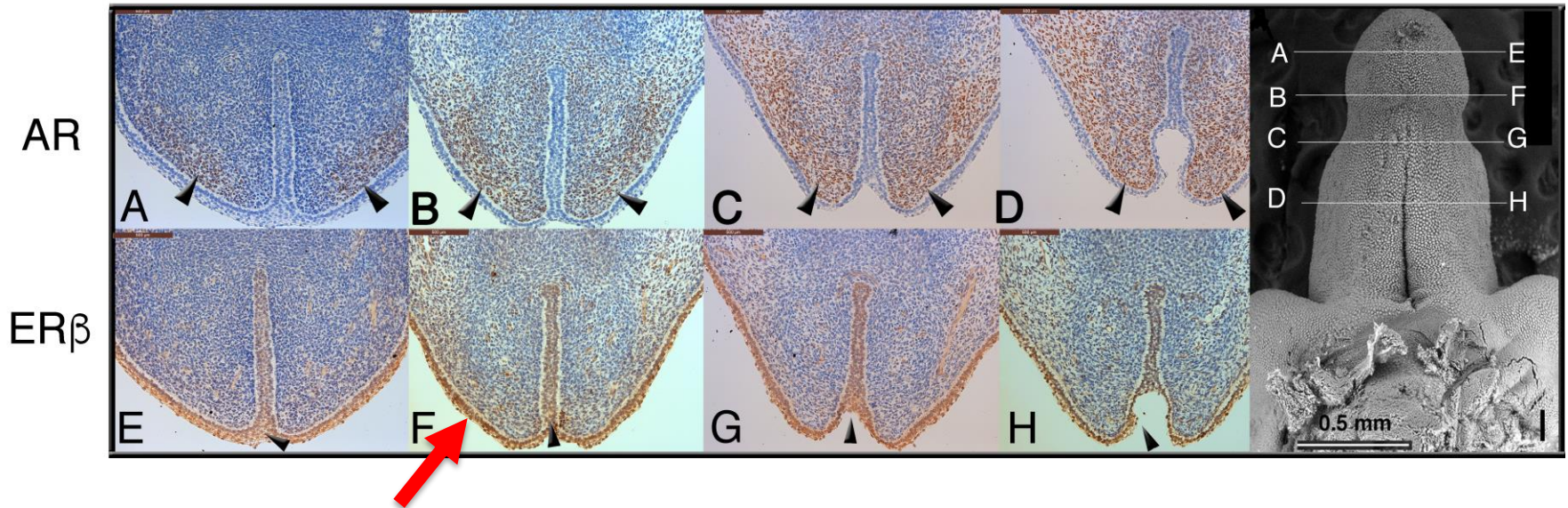
Human Genital Tubercle: Indifferent Stage 8 Weeks Gestation



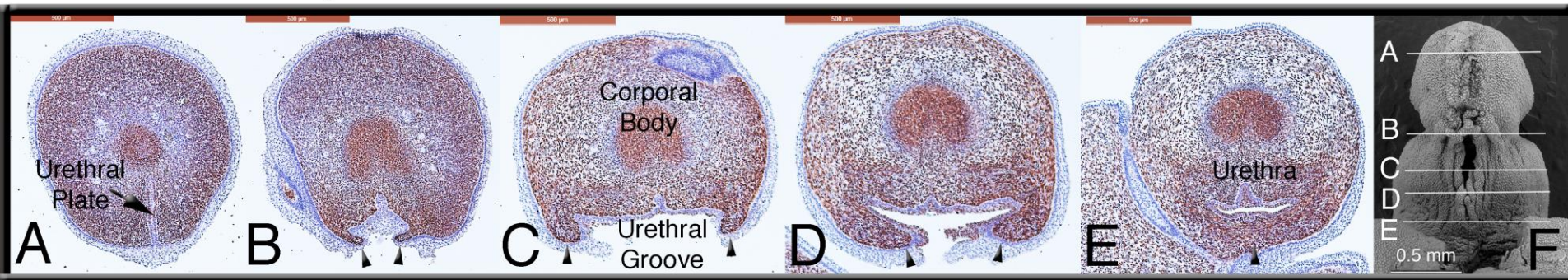
AR Expression Human Penis: 9 Weeks Gestation



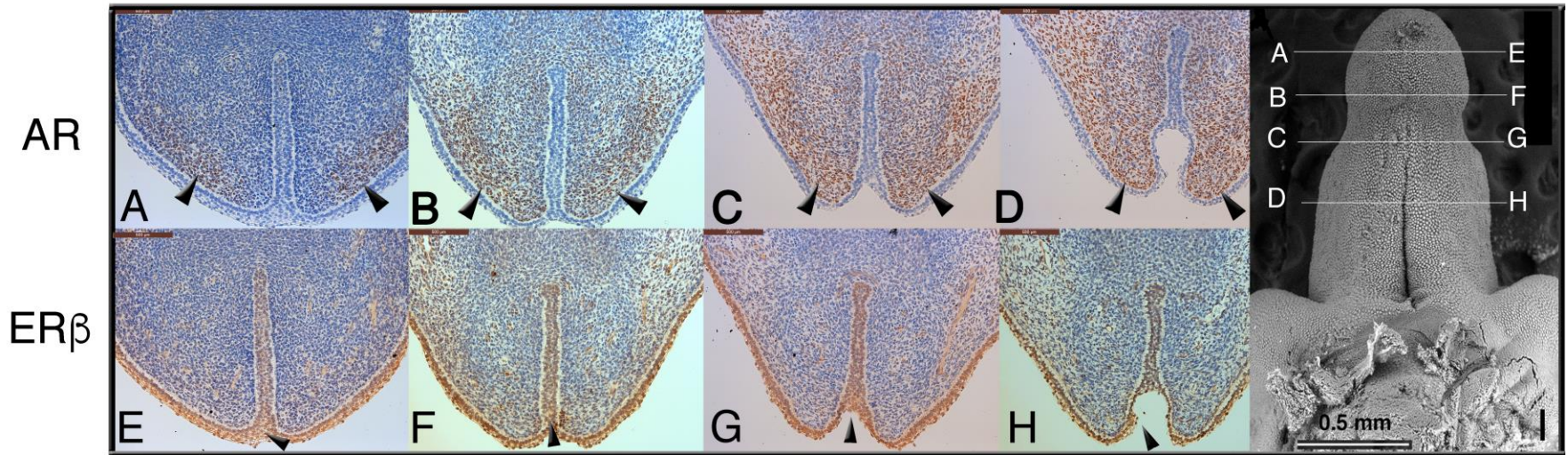
Human Genital Tubercle: Indifferent Stage 8 Weeks Gestation



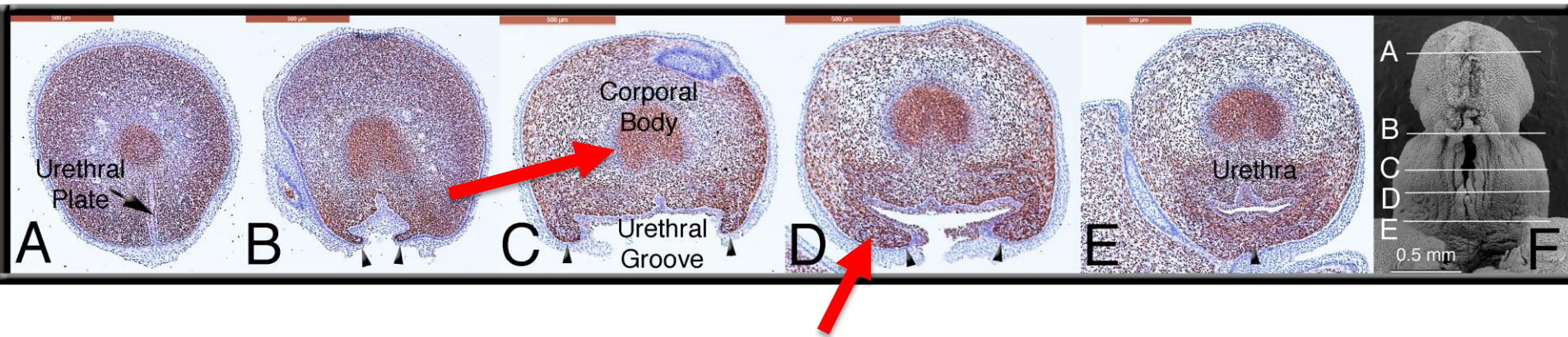
AR Expression Human Penis: 9 Weeks Gestation



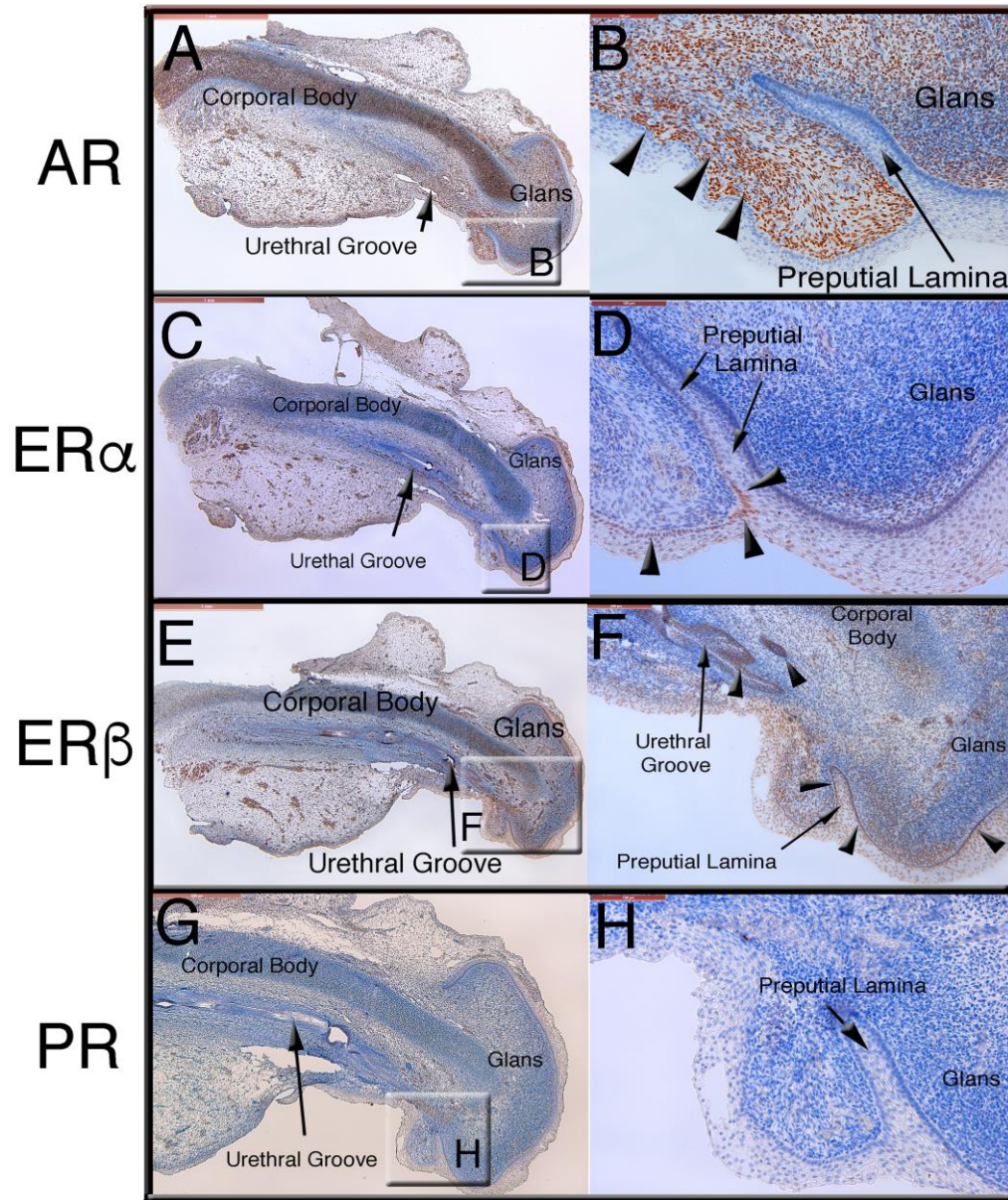
Human Genital Tubercle: Indifferent Stage 8 Weeks Gestation



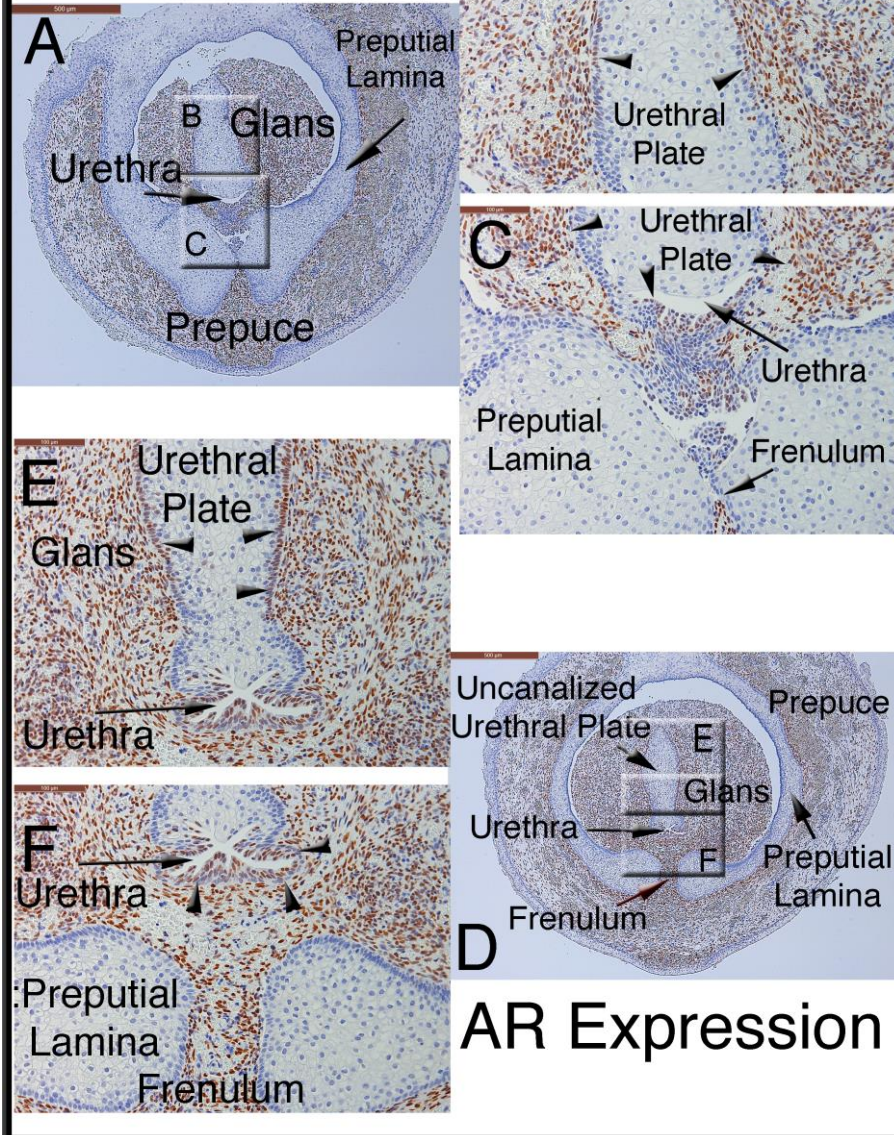
AR Expression Human Penis: 9 Weeks Gestation



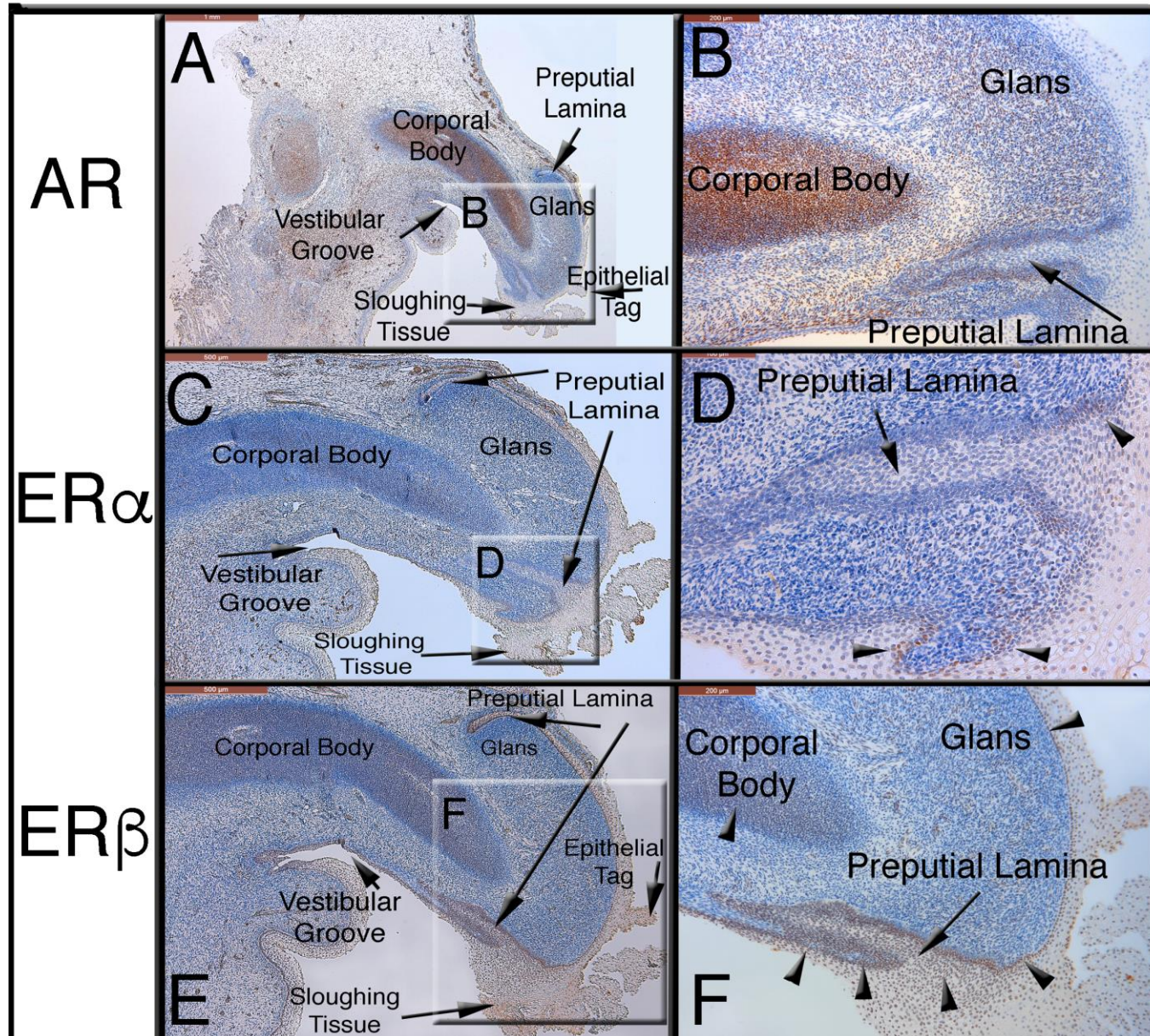
Human Fetal Penis: 11.5 Weeks Gestation



Penis: 15 Week Gestations



Clitoris: 12.5 weeks Gestation



Conclusions

- AR, ER α , and ER β are all expressed to varying degrees in strategic locations in the developing penis and clitoris.
- AR is expressed in close proximity to the urethral groove, consistent with its role in penile urethral formation
- ER α and ER β are expressed in epithelium of preputial lamina and other areas of remodeling, suggesting role in both normal development and hypospadias

Thanks!

- Special thanks
 - Laurence Baskin
 - Gerald Cunha
 - Adriane Sinclair
 - Mei Cao
 - Maya Overland
 - Dylan Isaacson
 - Amber Derpinghaus

