

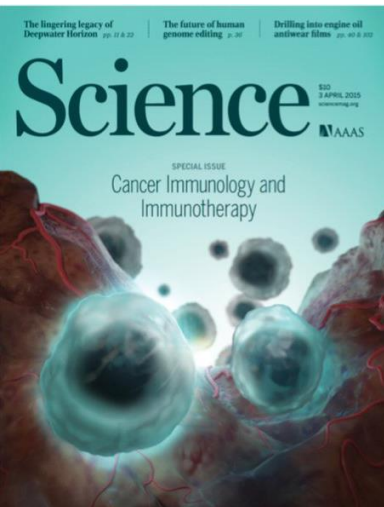


Urology Research Lab

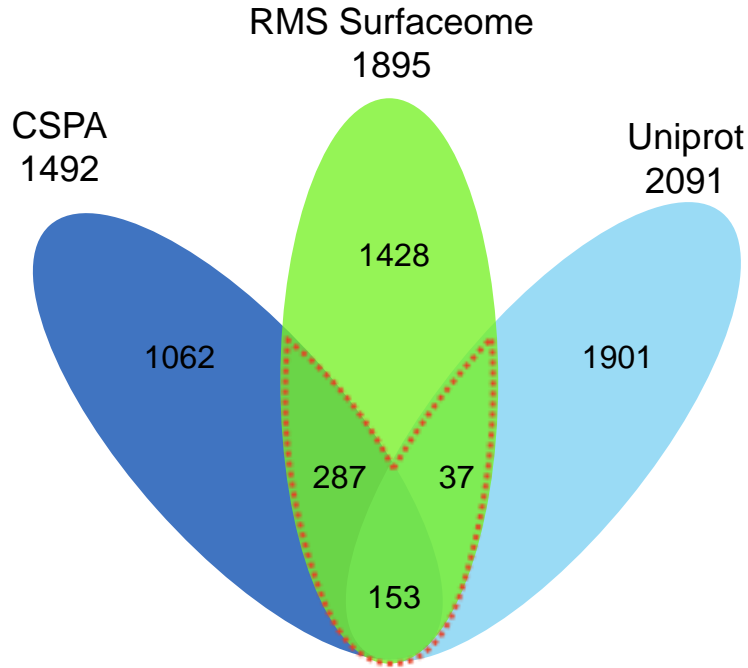
Surfaceome Profiling of Rhabdomyosarcoma Reveals Target Antigens for Immune-Based Therapies

Roxane R.Lavoie, Fabrice Lucien-Matteoni, Vidhu Joshi, Patricio Gargollo and Candace Granberg

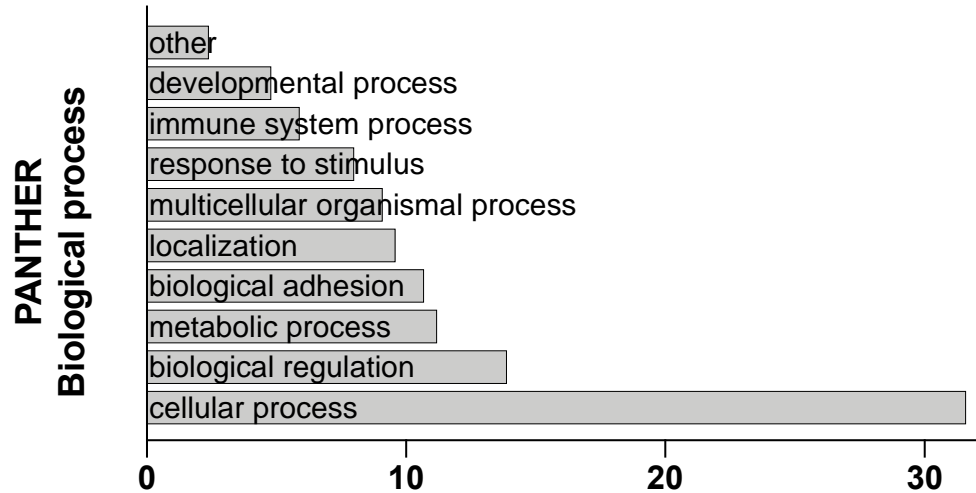
Cancer Immunotherapy



A cell-surface protein signature upregulated in RMS



Overexpressed in RMS cells (5 fold)

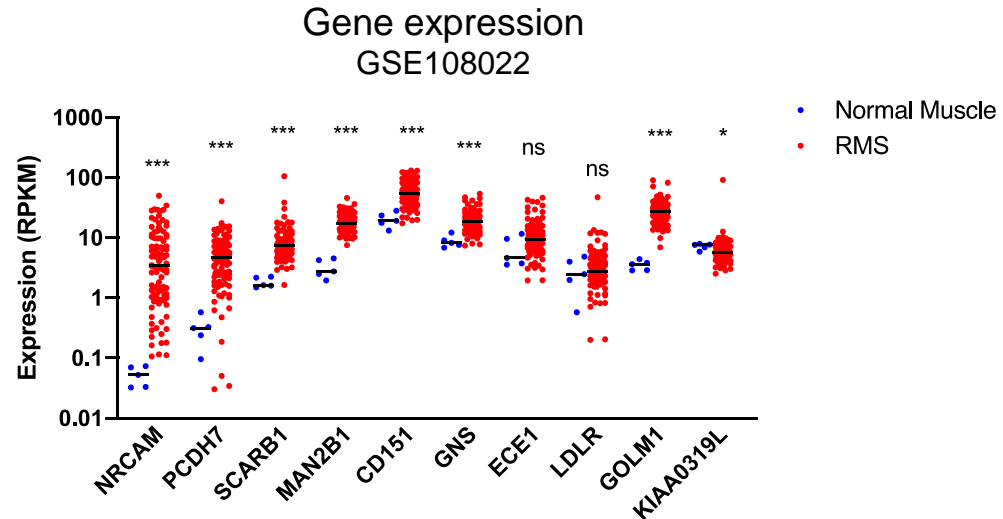


A RMS specific surfaceome validated by transcriptomics

Proteomics

Gene	Full Name
NRCAM	Neuronal Cell Adhesion Molecule
PCDH7	Protocadherin 7
SCARB1	Scavenger Receptor Class B Member 1
MAN2B1	Mannosidase Alpha Class 2B Member 1
CD151	CD antigen 151
GNS	Glucosamine -6-Sulfatase
ECE1	Endothelin Converting Enzyme 1
LDLR	Low Density Lipoprotein Receptor
GOLM1	Golgi Membrane Protein 1
KIAA0319L	Dyslexia-associated protein KIAA0319-like protein

Transcriptomics





Thank you

Roxane R.Lavoie, M.Sc.
Fabrice Lucien-Matteoni, PhD.
Vidhu Joshi

Patricio Gargollo, MD.
Candace Grandberg, MD.